



Beauty Beyond Limits

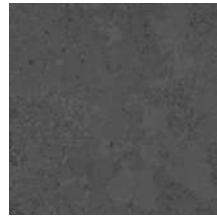
### NAZCA (silk finish)



Colibri



Spyder



Pukao

### MOAI (silk finish)



Nui

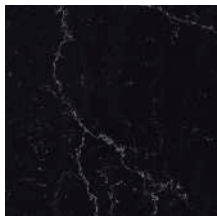


Sculpture

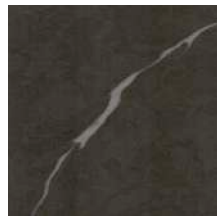


Eastern

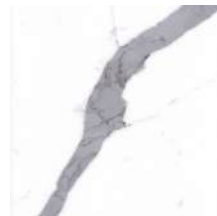
### PYRAMIDS (silk finish, \*polished finish)



Mask



Maze



Pharaon



Keops



Ramses\*



Cleopatra\*



Valley\*



Giza\*



Ra\*



Nerfertiti\*



Desert\*



Dynasty



Sphinx\*

\* Polished finish,

### GENERAL INFORMATION

- Unique composite material of mineral matrix and binders
- Available in three collections: Nazca (metallic patterns), Moai (cement patterns), and Pyramids (marble patterns)
- Through-body slabs with hyper realistic patterns and translucency
- Uses high-performance stain and substance repellent technology called Nano Enhancement of Surface (NEOS)

### SIZES & SPECIFICATIONS

- Slabs measure 63" x 126"
- Thicknesses available: 2cm and 3cm

### SUSTAINABILITY

- Notably has cut silica use in half

### APPLICATIONS

- Indoor countertops for kitchens, reception areas, sales counters, bathrooms



Pyramids - Valley



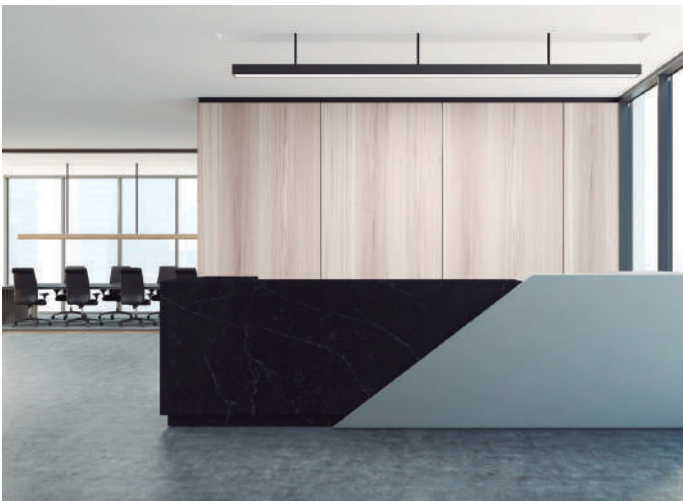
Moai - Eastern



Moai - Pukao



Pyramids - Pharaon



Pyramids - Mask



Nazca - Spyder